

Air Conditioning

Ducted Ultra 20kW (VRF)



Engineered for effortless efficiency

At Emerald we're on a mission to innovate change by engineering solutions that cost people and the planet less.

We have been leading the way in developing superior energy efficient products since 2006. Our Air Conditioning Ducted Ultra 20kW is no different, engineered to deliver maximum efficiency and comfort, while costing you and the planet less.

Our smart technology provides full control and visibility over your home's comfort and energy usage, allowing you to access usage details anytime, anywhere.



“ At Emerald, we want our customers to gain the most out of technology. We focus our energies on engineering products that are technologically superior, last longer and perform better. ”

Stuart Edgley Emerald Managing Director

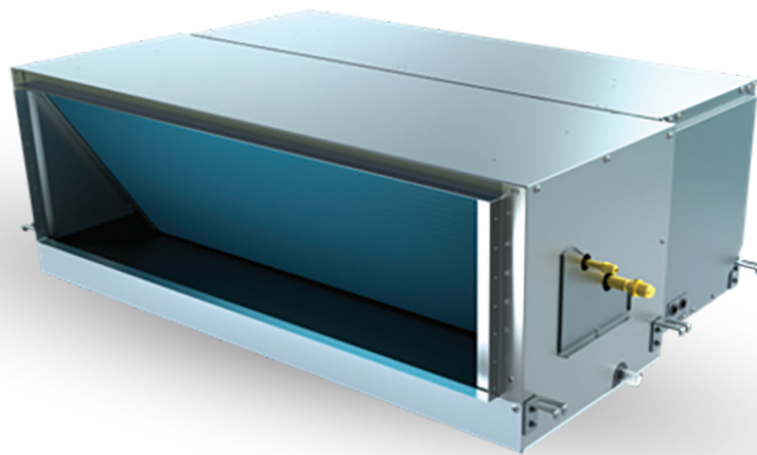
Stuart Edgley

Year-round comfort with effortless efficiency

Emerald Air Conditioning Ducted Ultra 20kW is designed to keep your home cool during scorching summers and cosy in chilly winters. Tailored for Australia's diverse climates, this system ensures optimal indoor temperatures regardless of the season.

Standing out for its exceptional energy efficiency, it features advanced refrigerant cycling technology and DC inverter technology, ensuring significant energy savings without compromising on performance.

Say goodbye to high gas and energy bills and hello to consistent comfort with Emerald!

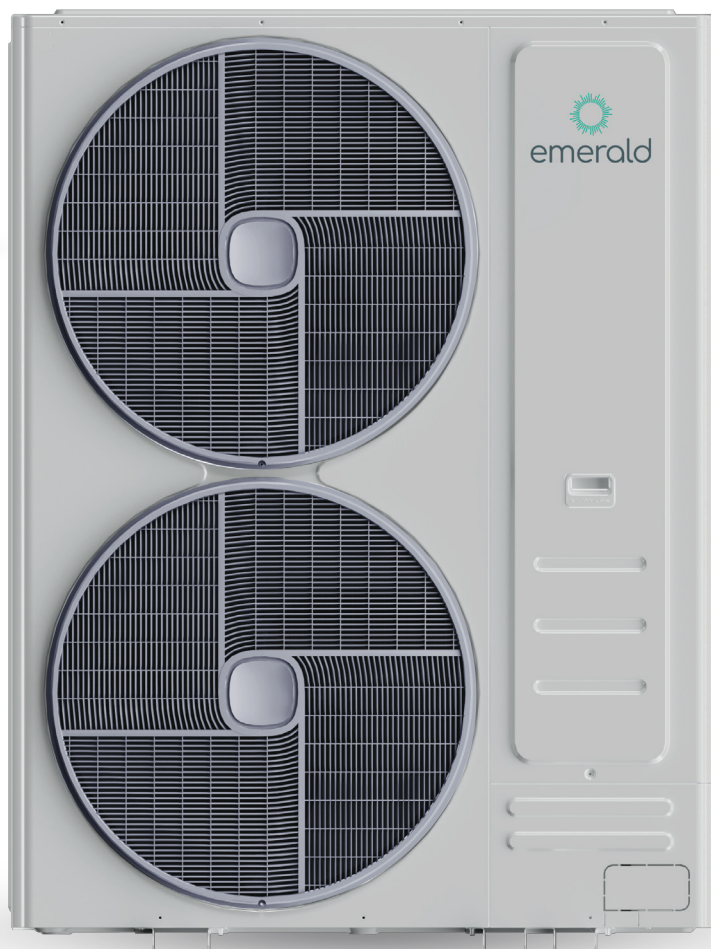


Indoor ducted unit



Wall mounted controller

Optional Emerald AC Link
EEMS-AIR-RF-WIFI



Outdoor unit

Engineered for

- Easy replacement of gas heating systems.
- Powerful airflow, cooling and heating even the largest rooms.
- Consistently low energy bills.
- Reliability and performance.
- Optional app control, at home or away with Emerald AC Link.



Comfort that costs you and the planet less

Breathe easy

Engineered to cut energy costs and reduce carbon emissions effectively, enhancing indoor air quality by filtering out common airborne pollutants.

Enjoy year-round climate control

Ducted reverse cycle air conditioning systems provide efficient heating and cooling for year-round comfort. Emerald engineering allows the system to easily switch between modes, keeping your home cosy in winter and cool in summer.

Australian design

We know about efficient heating and cooling and have added a anti-corrosive gold fin to withstand salt and rain, significantly extending the systems longevity.

Superior technology

Utilising advanced Direct Current (DC) technology to deliver exceptional performance, efficiency, and reliability. This technology optimises fan speeds to match demand accurately, enhancing energy efficiency.

Say goodbye to gas, for good

Our electric system is engineered for efficiency and offers a cost-effective alternative to traditional gas heating. By decreasing power usage and phasing out gas reliance, we promote a future of reduced energy waste and enhanced air quality.

Engineered for reliability and performance

Efficiency and comfort with DC technology

Utilising advanced Direct Current (DC) technology to deliver exceptional performance, efficiency, and reliability. This technology optimises fan speeds to match demand accurately, enhancing energy efficiency.

Ideal for retrofits and new builds

Whether you're upgrading, renovating or building from scratch, the versatile design offers an ideal solution for both modern and traditional homes. .

Climate control, anytime, anywhere

Make your air conditioner smart with the optional Emerald AC Link smart thermostat, giving you easy climate control from anywhere with Emerald App.

Gradually adjust the temperature to ensure a comfortable home without wasting energy on sudden changes.



Optional Emerald AC Link
EEMS-AIR-RF-WIFI





emerald.com.au