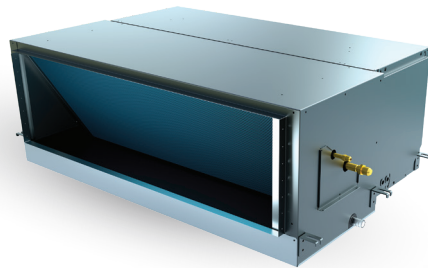


Air Conditioning

Ducted Ultra 20kW

Here's what you need to know to begin installing the Emerald Air Conditioning Ducted Ultra 20kW.

Designed to deliver outstanding performance in both residential homes and small commercial buildings, this system offers versatile climate control solutions. Follow this guide for a smooth and efficient installation process, ensuring optimal operation and comfort.



| Model | Heating | Cooling | Dimensions (LxWxH) | Weight |
|-----------------|---------|---------|--------------------|--------|
| Outdoor ACV200U | 26.0kW | 20.0kW | 440x1250x1650 | 165kg |
| Indoor ACV200D | 26.0kW | 20.0kW | 890x1300x470 | 84.5kg |

House sizing guide

| Model: outdoor unit | Minimum room area (m ²) | Maximum room area (m ²) |
|---------------------|-------------------------------------|-------------------------------------|
| ACV200U | 100 | 240 |

This product uses VRF technology, which enhances efficiency and control, enabling the system to operate effectively at lower capacities. For optimal performance and longevity, Emerald recommends installing this product in houses larger than 100 square meters.

Air Conditioning

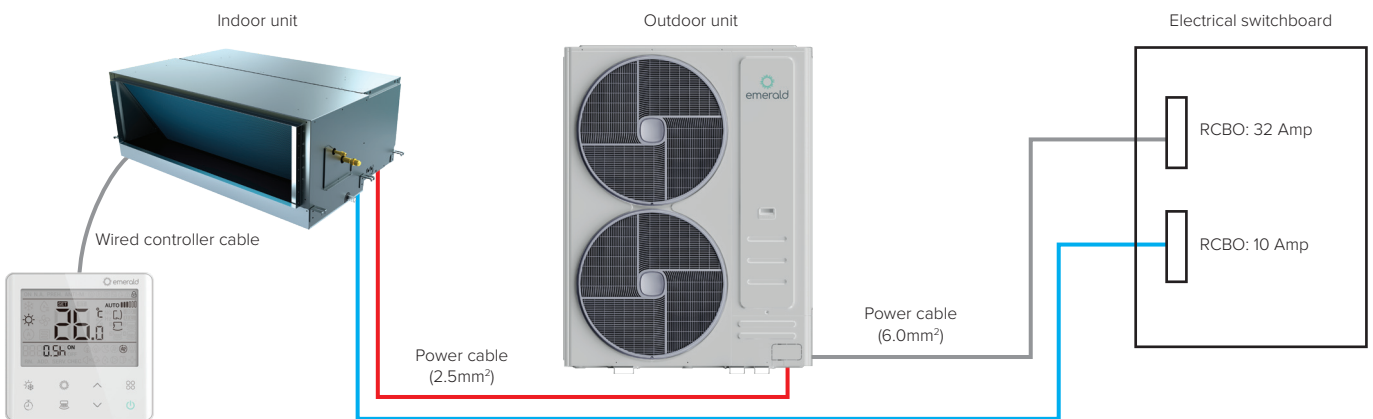
Ducted Ultra 20kW

Electrical installation

Isolators and cables

| | |
|----------------------------|--|
| Wired controller cable | 0.75mm ² 2 core shielded twisted pair |
| Outdoor unit rated current | 22.74 A |
| Outdoor unit breaker size | 32 A |
| Outdoor unit power cable | 6.0mm ² (power) |

| | |
|----------------------------------|----------------------------|
| Indoor unit rated current | 5.24 A |
| Indoor unit breaker size | 10 A |
| Indoor unit to indoor unit cable | 2.5mm ² (power) |



Refrigerant piping installation

Required

- Vacuum process
- Refrigerated handling license

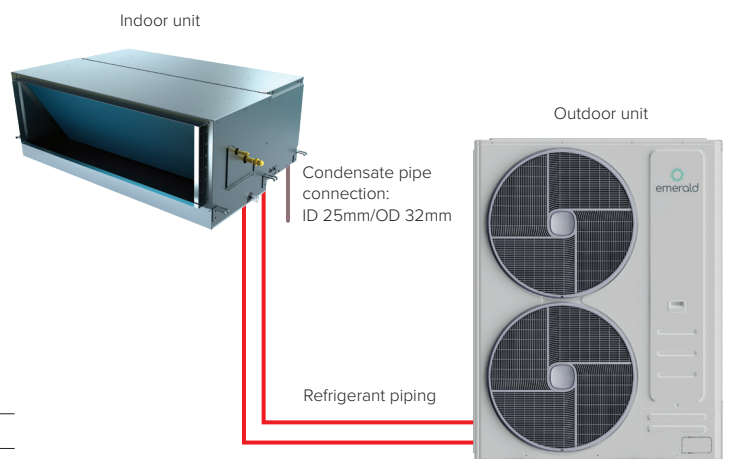
Recommended

- Nitrogen test

Piping connection sizes

| | |
|-------------|---------------------|
| Liquid line | Ø9.53mm (3/8 Inch) |
| Gas line | Ø19.05mm (3/4 Inch) |

All piping connections are flare connections, no welding or brazing required.



Ducting installation

Split design for ease of installation into the ceiling

Duct transformation sizes.

| | |
|------------|------------|
| Return Air | 420x1081mm |
| Supply Air | 390x1215mm |

